



**TakLite**  
— FLASHLIGHTS



**TAKLITE®**

**2016 PRODUCT CATALOGUE**

**AMERICA'S FAVORITE FLASHLIGHT BRAND**

## **ABOUT US:**

Located in the heart of New England, TakLite is owned and staffed by avid recreationists with a passion for the outdoors. Drawing inspiration from the tactical industry, TakLite prides itself on offering some of the most advanced flashlights for hunting, camping, fishing, military, and law enforcement.

As a specialty flashlight manufacturer, TakLite prioritizes performance and dependability above all else. Since its launch in 2014, TakLite has consistently distinguished itself from the competition through the use of rechargeable lithium-ion technology. Using the same cells found in modern electric cars, TakLite is able to deliver a level of value never before seen in tactical flashlights of this caliber.

## **WHAT SEPARATES TAKLITE FROM THE COMPETITION?**

The tactical flashlight industry is largely dominated by disposable lithium-metal technology. These batteries are expensive, non-rechargeable, and have proven to be a poor value purchase for consumers.

While the rest of the manufacturing world has already adopted lithium-ion technology for use in laptops, power tools, and mobile phones — the flashlight industry has yet to make the transition.

To date, TakLite is one of the few brands to have realized and implemented the power of lithium-ion technology — in a safe, affordable, and dependable manner. TakLite firmly believes the future of the industry is rooted in the same lithium-ion technology it has already been using for the last two years.



## **TA-50 MILITARY FLASHLIGHT:**

The TA-50 is the ultimate general purpose high-output flashlight. Featuring a 10 Watt driven XP-L diode, the TA-50 is one of the most advanced flashlights currently found in retail environments. Originally designed as a pocket-sized every day carry flashlight, the TA-50's extreme performance and functionality has quickly made it one of the most popular flashlights for us in any application imaginable.

Equipped with an internal lithium-ion battery, the TA-50 can easily be charged via USB. This global standard removes the need for bulky external chargers and makes it simple to charge the TA-50 anywhere

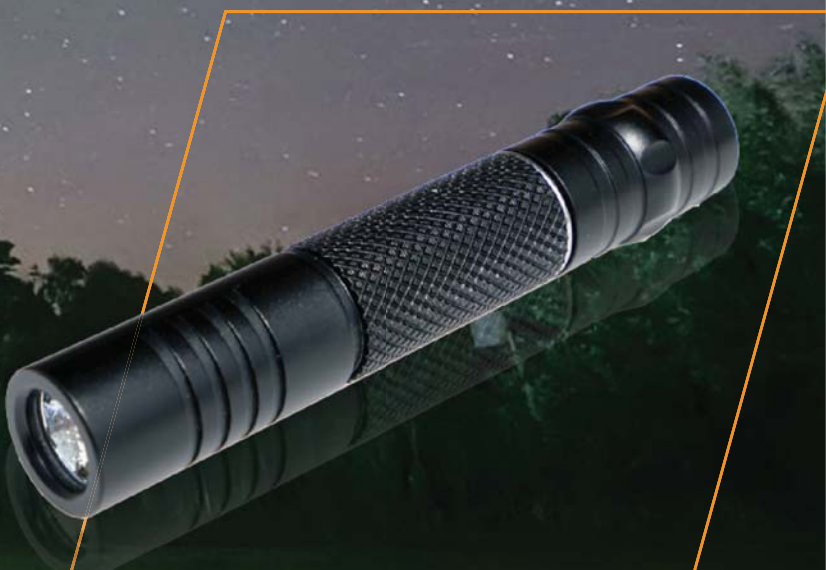
The TA-50 is constructed from ultra-thick T6 tempered 6061 aluminum and offers IPX-6 waterproofing. Manufactured in accordance with the standards outlined in MIL-STD-810 for drop testing, the TA-50 is one of the most durable models we offer.



## **TA-10 and TA-20 POCKET FLASHLIGHT:**

The TA-10 and TA-20 are entry level flashlights designed to supplant mainstream alkaline flashlights. Powered by a standard 1xAA or 1xAAA alkaline configuration, the TA-10 and TA-20 offer the durability and functionality of the TA-50 without deviating from the traditional alkaline format most consumers already know and love.

The TA-10 and TA-20's compact form factor and price make it a great choice for those needing a basic but powerful flashlight. With 130 and 150 lumen outputs respectively, the TA-10 and TA-20 are on average 250% brighter than flashlights found in convenience store environments.





## Z-PRO TACTICAL SCOPE



The Z-Pro Tactical Scope is the ultimate addition to any outdoor kit or duty belt. Featuring a massive 42mm lens diameter with tenfold magnification, the Z-Pro is able to offer a level of power and clarity not usually found in optical devices at this price point. A central focusing wheel makes adjustments easy and intuitive. The aluminum alloy chassis is housed in anti-slip marine vinyl and guarantees a lifetime of dependability.

The Z-Pro Tactical Scope is completely waterproof, fog proof, and drop resistant. Whether you're an outdoor enthusiast or a private investigator, the included lanyard and nylon holster makes it easy to carry the Z-Pro anywhere you go. Recommended applications include hunting, hiking, bird watching, sightseeing, law enforcement, and security.

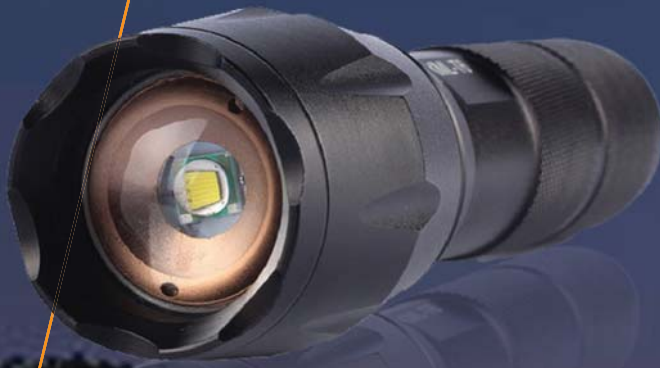




## 18650 BATTERY



As lithium-ion technology continues to gain traction in the consumer world, TakLite has positioned itself to be one of the most dependable distributors of 3.7v lithium-ion cells in the United States. Sourcing directly from industry leaders such as Panasonic and Samsung, TakLite is able to offer the safest and highest performing lithium-ion cells on the market. Featuring an integrated protection circuit, voltage is monitored and automatically cut off to prevent overcharging or excessive discharging. TakLite lithium-ion cells are consumer friendly, easy to use, and are superior to both alkaline and lower voltage nickel-metal hydride alternatives. As the popularity of tactical flashlights and other 18650-based appliances continues to rise, storeowners will see a greater demand for this particular style of battery. With all the uncertainty and technical nuances of lithium-ion cells, TakLite makes it easy for storeowners to buy authentic cells from a domestic distributor.



## APOLLO LED FLASHLIGHT

One of the few models remaining in the TakLite classic series, the Apollo LED Flashlight is an affordable introduction into the world of tactical flashlights. Featuring a traditional sliding zoom (adjustable beam) and five-mode operation, the Apollo bridges the gap between generic consumer models and high-end premium flashlights. The easy-to-use alkaline configuration and weather resistant seals makes it a perfect flashlight for almost anyone.

Powered by a CREE XM-L2, an upgraded diode not found in competing models, the Apollo emits a modest 700 lumens while retaining the tactical characteristics that define a proper flashlight. Additional features include an aluminum defensive strike bezel, lanyard, and lithium-ion compatibility.



## TakLite Classic Series

As the demand for performance continues to grow, TakLite's original product line was soon overhauled to meet standards. While most of the original models have since been discontinued, the two best sellers were retained and continue to be high performing models. Flashlights like the Apollo and Zeus do not have the same build quality found in premium models like the TA-50, but historical performance and feedback continues to ensure the success of the classic series for years to come.

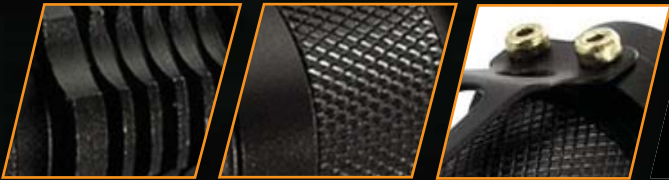




Similar to the Apollo, the Zeus also features an adjustable beam and multi-mode operation. The smaller form factor makes it a great fit for those needing a smaller sized flashlight. The tactical design and moderate output gives the Zeus LED Flashlight a universal appeal.

Powered by a CREE Q5 diode, the brightness and clarity of the Zeus is comparable to other flashlights of similar battery configurations (1xAA). Simple, affordable, and attractive.

**ZEUS LED FLASHLIGHT**





TAKLITE LLC



125 WASHINGTON STREET  
FOXBORO, MA, 02035  
UNITED STATES OF AMERICA